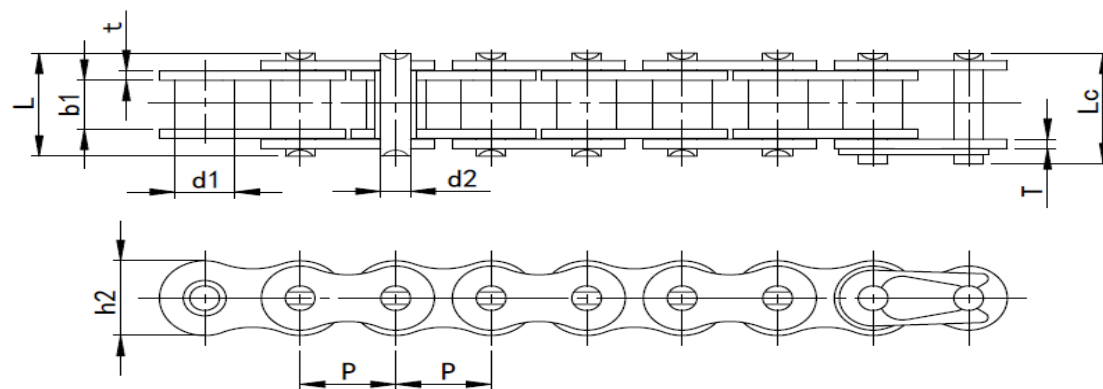
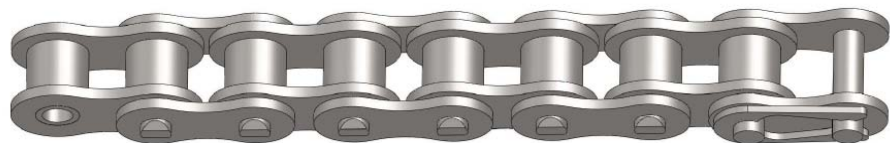


Special roller chain

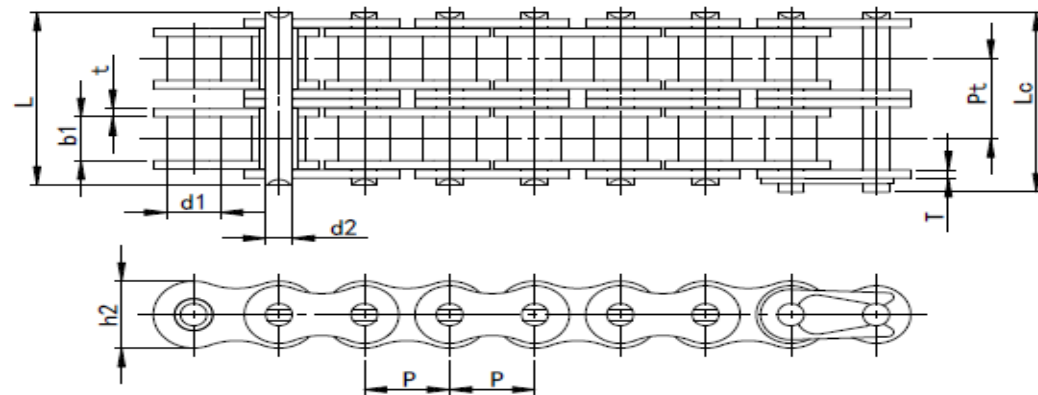
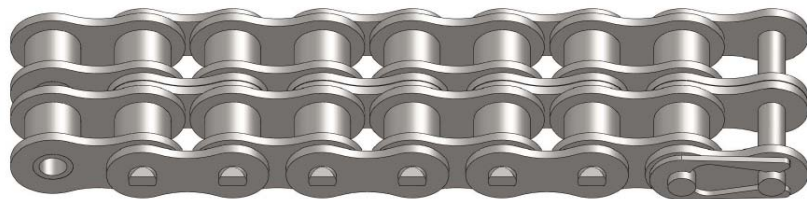
Simplex chain



ZMIE Chain No.	Pitch	Roller diameter	Width between inner plates	Pin diameter	Pin length		Inner plate depth	Plate thickne	Ultimate tensile strength	Weight per meter	
	P	d1 max	b1 min	d2 max	L max	Lc max	h2 max	T max	Q min	q	
	mm	mm	mm	mm	mm	mm	mm	mm	KN	kg/m	
03C-1	15.0	4.8	2.5	2.4	1.6	6.1	6.9	4.3	0.6	1.8	0.1
04C-1	25.0	6.4	3.3	3.2	2.3	7.9	8.4	6.0	0.8	3.5	0.2
06C-1	35.0	9.5	5.1	4.8	3.6	12.4	13.17	9.0	1.3	10.8	0.3
04B-1	6.0	4.0	2.8	1.9	6.8	7.8	5.0	0.6	3.0	0.1	
05B-1	8.0	5.0	3.0	2.3	8.2	8.9	7.1	0.8	5.0	0.2	
06B-1	9.5	6.4	5.7	3.3	13.2	14.1	8.2	1.3	9.0	0.4	

ZMIE Chain No.	Pitch	Roller diameter	Width between inner plates	Pin diameter	Pin length		Inner plate depth	Plate thickne	Ultimate tensile strength	Weight per meter	
	P	d1 max	b1 min	d2 max	L max	Lc max	h2 max	T max	Q min	q	
	mm	mm	mm	mm	mm	mm	mm	mm	KN	kg/m	
081	12.7	7.8	3.3	3.7	10.2	11.6	9.8	1.2	8.0	0.3	
083	415.0	12.7	7.8	3.9	4.1	12.9	14	10.3	1.3	11.6	0.5
084	415H	12.7	7.8	3.9	4.1	13.4	14.5	11.8	1.5	15.6	0.5
085	41.0	12.7	6.4	7.8	3.6	13.8	15	9.9	1.3	6.7	0.4

Duplex chain



ZMIE Chain No.	Pitch	Roller diameter	Width between inner plates	Pin diameter	Pin length		Inner plate depth	Plate thickness	Transverse pitch	Ultimate tensile strength	Weight per meter
	P	d1 max	b1 min	d2 max	L max	Lc max	h2 max	T max	Pt	Q min	
	mm	mm	mm	mm	mm	mm	mm	mm	mm	KN	
04C-2 25-2	6.4	3.3	3.2	2.3	14.5	15	6.0	0.8	6.4	7.0	0.28
06C-2 35-2	9.5	5.1	4.8	3.6	22.5	23.3	9.0	1.3	10.1	15.8	0.63
085-2 41-2	12.7	7.8	6.3	3.6	25.7	26.9	9.9	1.3	12.0	13.3	0.81
05B-2	8.0	5.0	3.0	2.3	13.9	14.5	7.1	0.8	5.6	7.8	0.33
06B-2	9.5	6.4	5.7	3.3	23.4	24.4	8.2	1.3	10.2	16.9	0.77